

akropol

COMPUTER | ENGINEERING | ARCHITECTURE

“Technology is Art”

Who are we?



- Akropol was founded in 1995 in Turkey and by this year we are celebrating 18th year of active working in the field.
- As known; the fields where the information technologies are mostly being used are engineering and architecture fields.
- Our firm considers Engineering, Architecture and Computer fields are so much related with each other.
- Thus the foundation of the company bases on: producing new solutions by using computer technologies in the field of Engineering and Architecture.
- Overall aim of Akropol is, producing solutions for private and public bodies on the field of Engineering and Architecture.

Academic Relations



- Akropol that has strong relations with academics, getting consultancy from Scholars of Istanbul Technical University.
- Akropol that completed the R-D project in Istanbul Techninal University is going on the R-D activities in Eskisehir ATAP TechnoCity.
- Akropol has tax allowence for it's R-D projects, hence we are able to manage big projects with a relevant cost.

Business Relations



- Akropol is the vendor of; ERDAS Software, ESRI Products and TRIMBLE.
- Akropol is the only reseller of PICTRAN, and NEPTAN GPS in overall Turkey.
- Head Office of Akropol is in Istanbul.
- Also there is a branch office in Eskisehir that responsible for **R&D Activities**.

8 Trade Marks

akropol

akrospace

Space Thecnologies, Remote Sensing, Satellite Systems

akrolaser

Laser Scanning Systems, Mobile Laser Scanning

akrogis

Geographical Information System, Software and Trainings

akrogps

GPS Modules, Mobile Tracking Systems

akrocity

City Information Systems, City Planning

akroheritage

Ancient Monuments Renovation, Restoration, Archeology

akrosoft

Software Development, Trainings and R&D

akrocoach

Consultancy Services, EU Grants

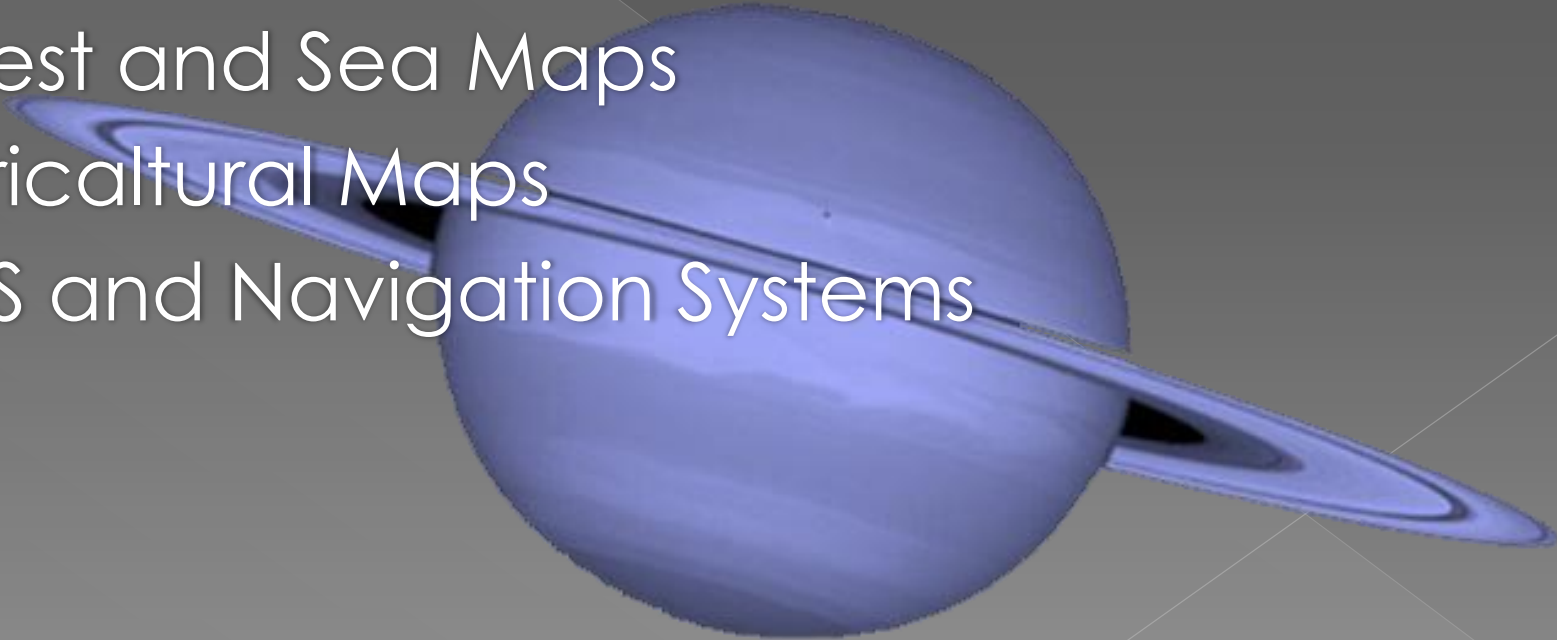


akrospace

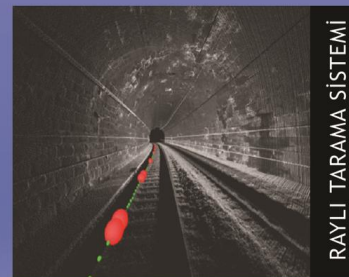
Space Thecnologies, Remote Sensing, Satellite Systems

akropol

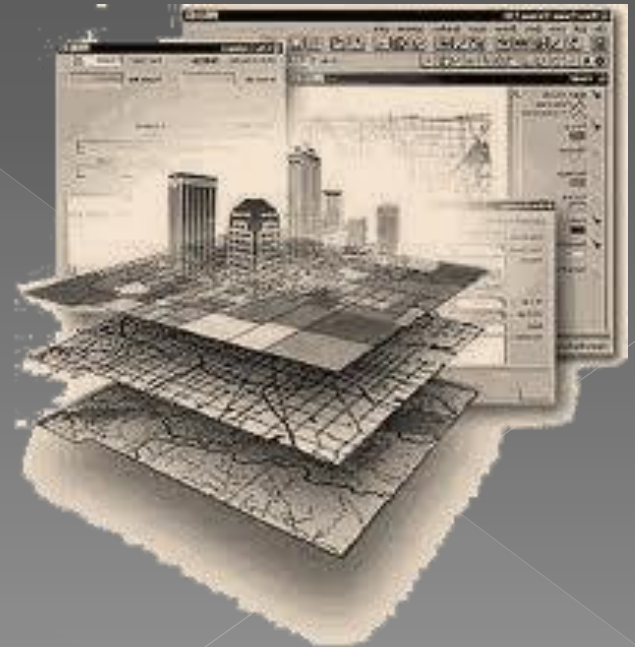
- ◉ Akropol provides many kinds of high resolution satellite images.
- ◉ City Maps
- ◉ Forest and Sea Maps
- ◉ Agricultural Maps
- ◉ GPS and Navigation Systems



- Beside the traditional laser scanning systems; Akropol provides modern scanning services such as Mobile Laser Scanning, Rail Laser Scanning and Lidar.



- City Information Systems
- Disaster Information Systems
- Ground Information Systems
- Basin Information Systems



Geographical Information System, Software and Trainings

[illegible]

- Akropol not only provides GPS Modules but also designs Mobile Tracking Systems based on the needs of the costumers.

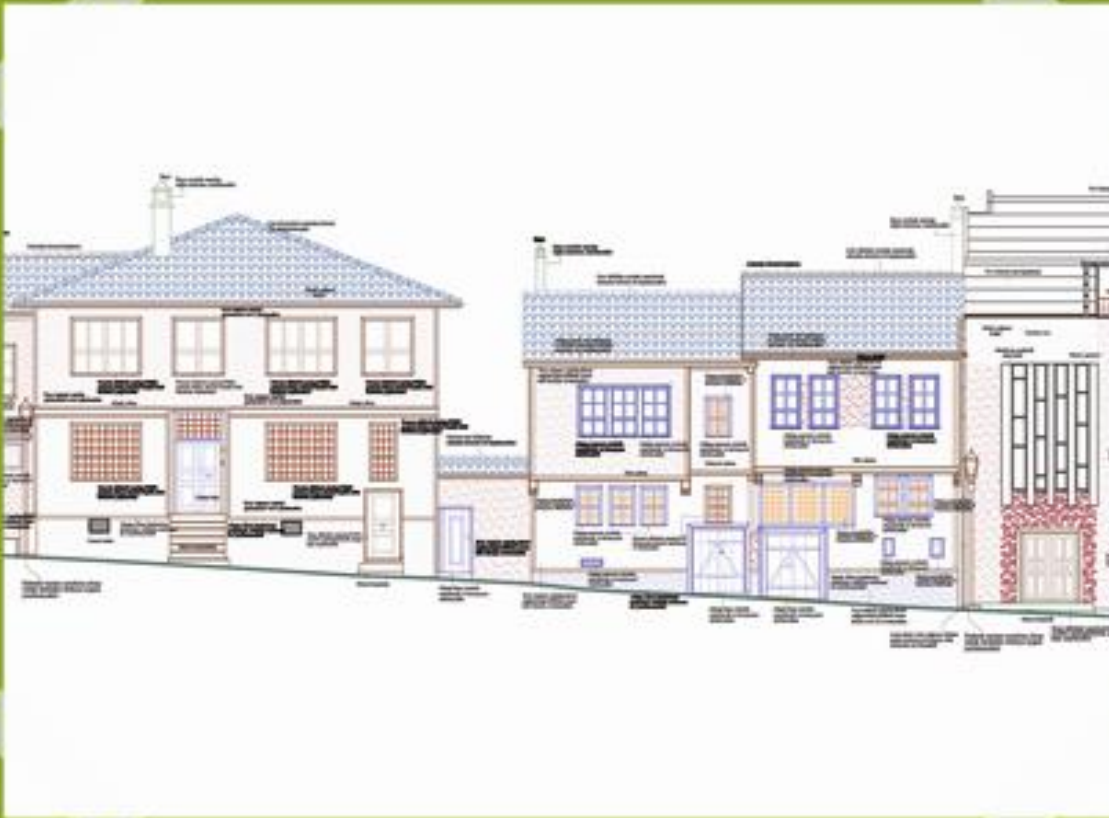


- Akropol prepares City Information Systems specifically responds the needs of the municipalities.
- Akropol also connects different information databases to set up “one” information system where the user can reach any information rapidly.
- City Rehabilitations, City Designs, and 3D City Modelling are some of the akrocity services.

akrocity

City Information Systems, City Planning

akropol



akroheritage

Ancient Monuments Renovation, Restoration, Archeology

akropol

- ◉ Photogrammetric Survey
- ◉ Restitution and Restoration
- ◉ Ancient Monuments Renovation
- ◉ Archeological Applications
- ◉ Strengthening of Ancient Monuments

akroheritage

Ancient Monuments Renovation, Restoration, Archeology

akropol



- Akropol has a branch office in in Eskisehir ATAP TechnoCity conducting the R&D Activities.
- Akropol has infrastructure to develop softwares according the needs of the costumers.



- ◉ City Management Consultancy
- ◉ Disaster Management Consultancy
- ◉ Project Management Consultancy
- ◉ EU Grants Consultancy
- ◉ Software Trainings



CONTACT



HEAD OFFICE | ISTANBUL

KATİP MUSTAFA ÇELEBİ MAH. HOCAZADE SOK.

MUTLU APT. NO:19 D:2 SIRASELVİLER

TAKSİM/BEYOĞLU

İSTANBUL-TURKEY

Tel: +90 212 293 293 0

Fax: +90212 285 24 73

WEB

www.akropol.com.tr

E-MAIL

info@akropol.com.tr

FACEBOOK

[facebook/akropolgrup](https://www.facebook.com/akropolgrup)

YOUTUBE

[youtube/akropolgrup](https://www.youtube.com/akropolgrup)